

THIS CIRCUIT IS REPEATED 12 TIMES.
 THE REF DESIGNATORS AND LABEL
 DIFFERENCES BETWEEN THE CIRCUITS ARE
 SHOWN IN THE TABLE BELOW

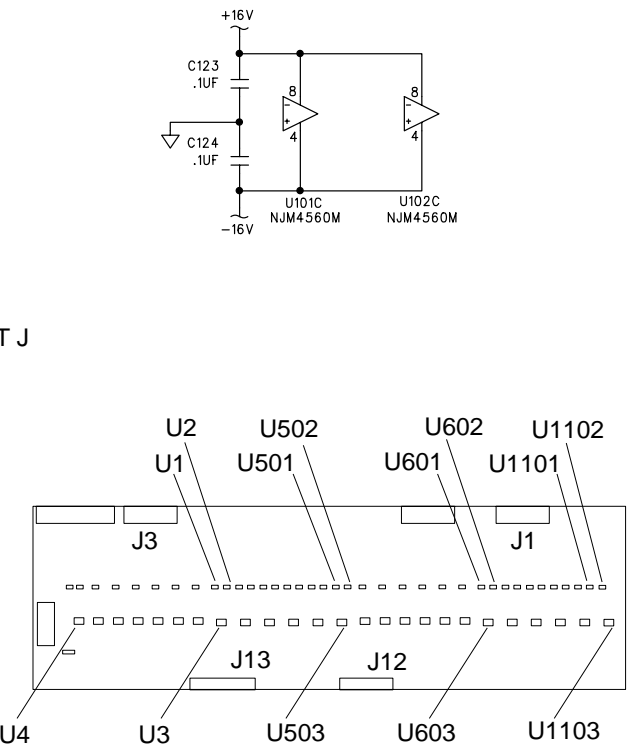
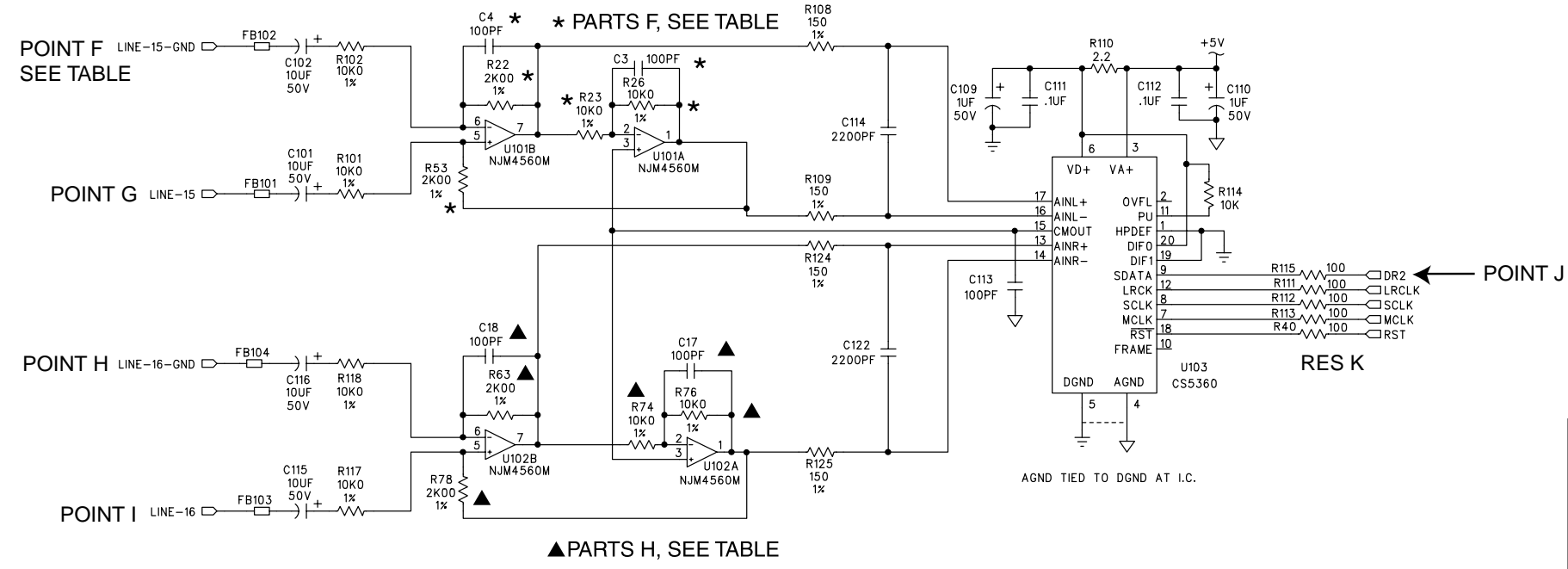


TABLE OF DIFFERENCES
 WHERE THE CHANNELS ARE OTHERWISE IDENTICAL

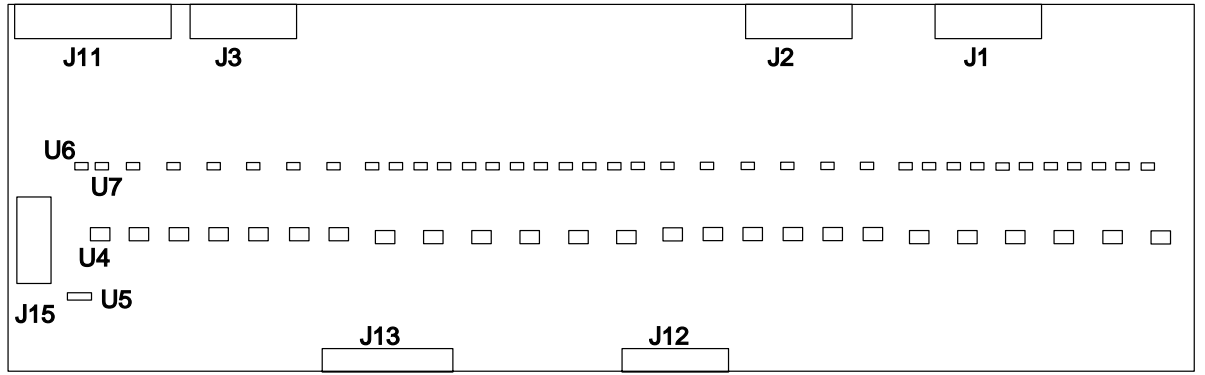
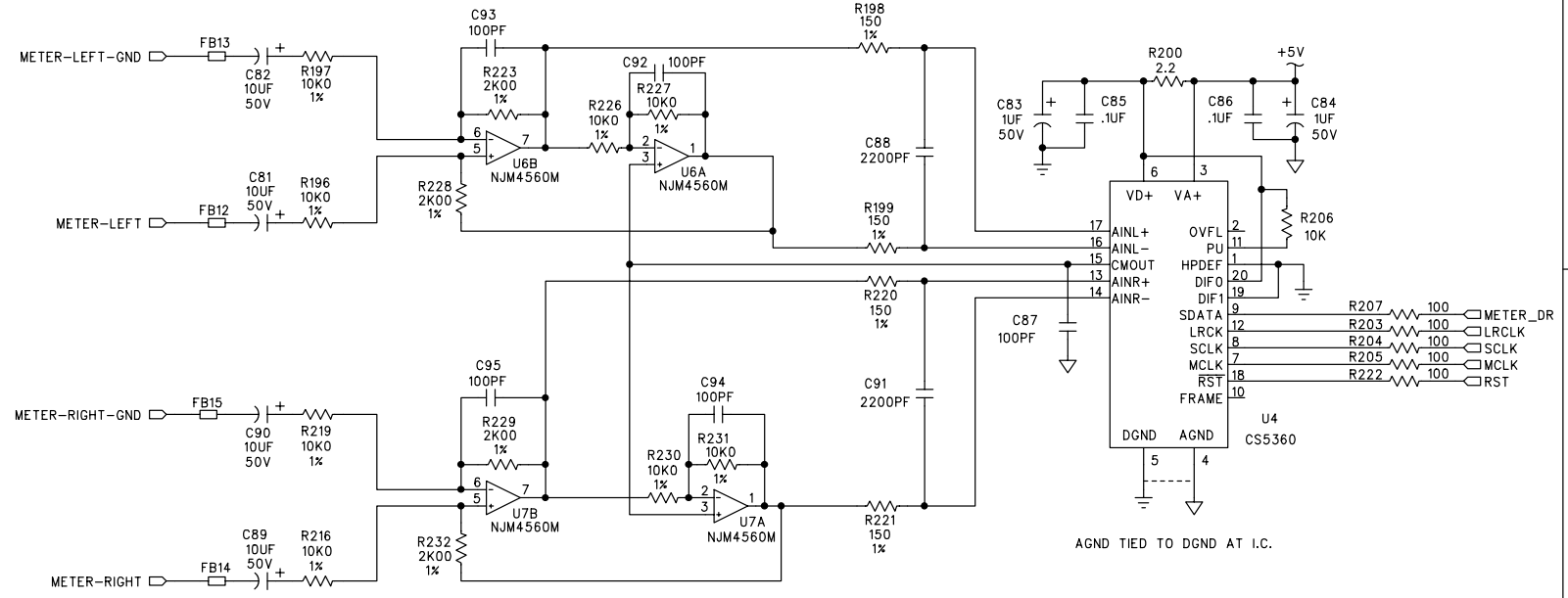
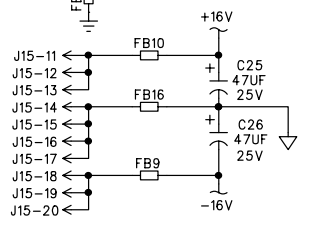
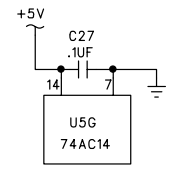
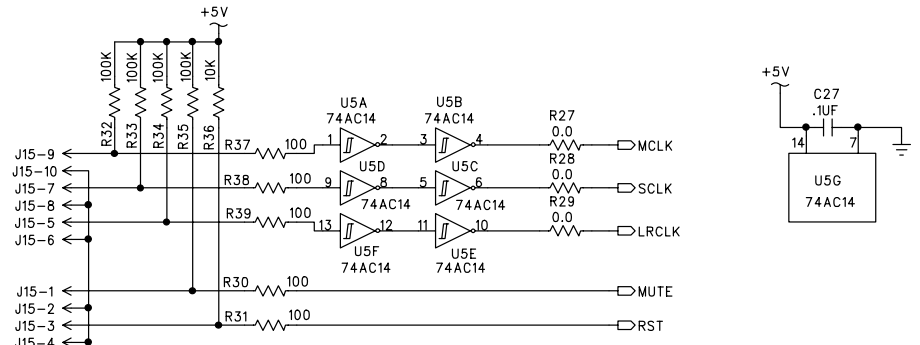
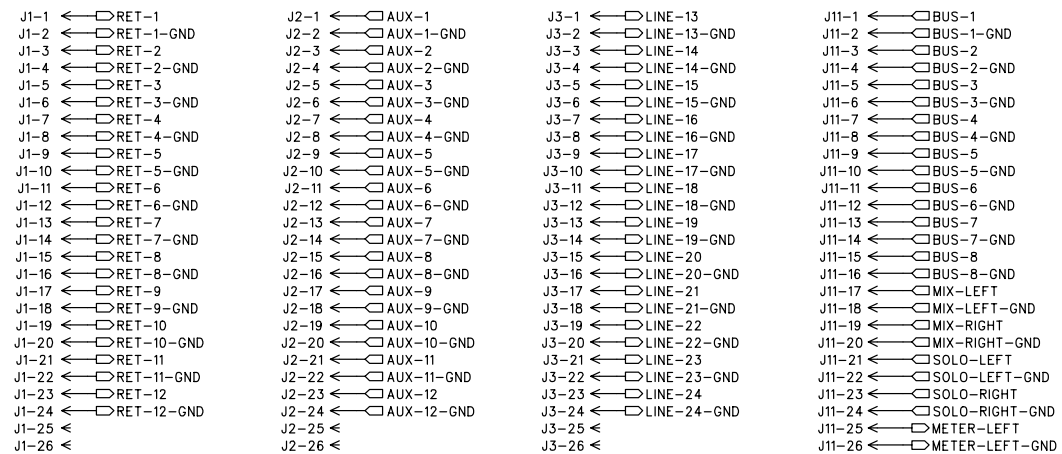
IC	PARTS RANGE	POINT F	POINT G	POINT H	POINT I	POINT J	* PARTS F						▲ PARTS H						RES K
							C6	C5	R3	R4	R5	R6	C8	C7	R7	R19	R20	R21	
U3	IN THE 10'S	LINE-13 GND	LINE-13	LINE-14 GND	LINE-14	DR1	C6	C5	R3	R4	R5	R6	C8	C7	R7	R19	R20	R21	R16
U103	IN THE 100'S	LINE-15 GND	LINE-15	LINE-16 GND	LINE-16	DR2	C4	C3	R22	R23	R26	R53	C18	C17	R63	R74	R76	R78	R40
U203	IN THE 200'S	LINE-17 GND	LINE-17	LINE-18 GND	LINE-18	DR3	C20	C19	R79	R80	R81	R82	C28	C21	R83	R84	R85	R86	R41
U303	IN THE 300'S	LINE-19 GND	LINE-19	LINE-20 GND	LINE-20	DR4	C30	C29	R87	R88	R89	R90	C32	C31	R91	R92	R93	R94	R42
U403	IN THE 400'S	LINE-21 GND	LINE-21	LINE-22 GND	LINE-22	DR5	C34	C33	R95	R96	R97	R98	C36	C35	R99	R100	R103	R104	R43
U503	IN THE 500'S	LINE-23 GND	LINE-23	LINE-24 GND	LINE-24	DR6	C38	C37	R105	R106	R107	R116	C40	C39	R119	R120	R121	R122	R44
U603	IN THE 600'S	RET-1 GND	RET-1	RET-2 GND	RET-2	DR7	C42	C41	R123	R126	R127	R128	C44	C43	R129	R130	R131	R132	R45
U703	IN THE 700'S	RET-3 GND	RET-3	RET-4 GND	RET-4	DR8	C46	C45	R133	R134	R135	R136	C48	C47	R137	R138	R139	R140	R46
U803	IN THE 800'S	RET-5 GND	RET-5	RET-6 GND	RET-6	DR9	C50	C49	R141	R142	R143	R144	C66	C65	R145	R146	R147	R148	R47
U903	IN THE 900'S	RET-7 GND	RET-7	RET-8 GND	RET-8	DR10	C70	C68	R149	R150	R153	R163	C72	C71	R174	R176	R178	R179	R48
U1003	IN THE 1000'S	RET-9 GND	RET-9	RET-10 GND	RET-10	DR11	C74	C73	R180	R181	R182	R183	C76	C75	R184	R185	R186	R187	R49
U1103	IN THE 1100'S	RET-11 GND	RET-11	RET-12 GND	RET-12	DR12	C78	C77	R188	R189	R190	R191	C80	C79	R192	R193	R194	R195	R50
U4	SEE SHEET 2	METER-L GND	METER-L	METER-R GND	METER-R	METER_DR	SEE SHEET 2						SEE SHEET 2						

About this table:
 The circuit is repeated 12 times on the CODEC board, so instead of wasting paper and disk space, this table was created. It shows the difference between the reference designators and the main points from one circuit to the next. In most case, the reference designators vary only in the hundreds, for example R103, R203, and R503 etc.
 The "Parts H" and "Parts F" do not follow this rule, and the following example may help:
 Using the U103 circuit shown, find C4 (circled under Parts F). The reference designator for the same part used on the U403 circuit is C34, and for the U703 circuit it is C46, reading in the column below C4.
 Note that all the parts values remain the same from one circuit to the next, ohms, farads, picanooodles, foot-lamberts etc.

NOTE: THE CIRCUIT FOR U4 (WHICH IS FOR METER-LEFT AND METER-RIGHT) HAS PART NUMBERS WHICH DO NOT FOLLOW THE NORMAL 100, 200, 300 MACKIE WAY, SO THIS PARTICULAR CIRCUIT IS SHOWN ON SHEET 2
 NOTE: LINE-13 TO LINE-24 CONNECT TO J3
 RET-1 TO RET-12 CONNECT TO J1
 DR1 TO DR8, AND METER_DRV CONNECT TO J13
 DR9 TO DR12 CONNECT TO J12
 SEE SHEET 2 FOR CONNECTOR DETAILS

APPROVALS	DATE	 Mackie Designs Inc. Woodinville, Wa.
DRAWN: KR	3-26-97	
SCHEMATIC, DIGITAL 8-BUS A/D D/A "CODEC" CARD		
SIZE SCALE: D NONE	DWG. NO. 990-113-00	REV. B
DWG FILE:		Sheet 1 of 4

ECO#	REV.	DESCRIPTION	REV. BY:	APP. BY:	DATE
B	1990	BUS OUTPUT FILTER FOR ESD DGND TO CHASSIS THROUGH STANDOFF	KR		11-6-98



- Z1 706-055-00 STANDOFF, SWAGE, 6-32 X .500L
 - Z2 706-055-00 STANDOFF, SWAGE, 6-32 X .500L
 - Z3 706-055-00 STANDOFF, SWAGE, 6-32 X .500L
 - Z4 706-055-00 STANDOFF, SWAGE, 6-32 X .500L
 - Z5 706-055-00 STANDOFF, SWAGE, 6-32 X .500L
 - Z6 706-055-00 STANDOFF, SWAGE, 6-32 X .500L
 - Z7 706-055-00 STANDOFF, SWAGE, 6-32 X .500L
 - Z8 706-055-00 STANDOFF, SWAGE, 6-32 X .500L
- 450-113-00 PCB, DIGITAL 8-BUS: "CODEC" CARD

APPROVALS	DATE
DRAWN: KR	3-26-97
CHECKED: J PACE	6-14-98
NP ENG: P WATTS	6-18-98
MATERIAL:	
MFG:	
MFG ENG:	
ISSUED: LEIGH	6-18-98

MACKIE.
Mackie Designs Inc. Woodinville, Wa.

SCHEMATIC, DIGITAL 8-BUS
A/D D/A "CODEC" CARD

SIZE: D	SCALE: NONE	DWG. NO. 990-113-00	REV. B
DWG FILE:		Sheet 2 of 4	

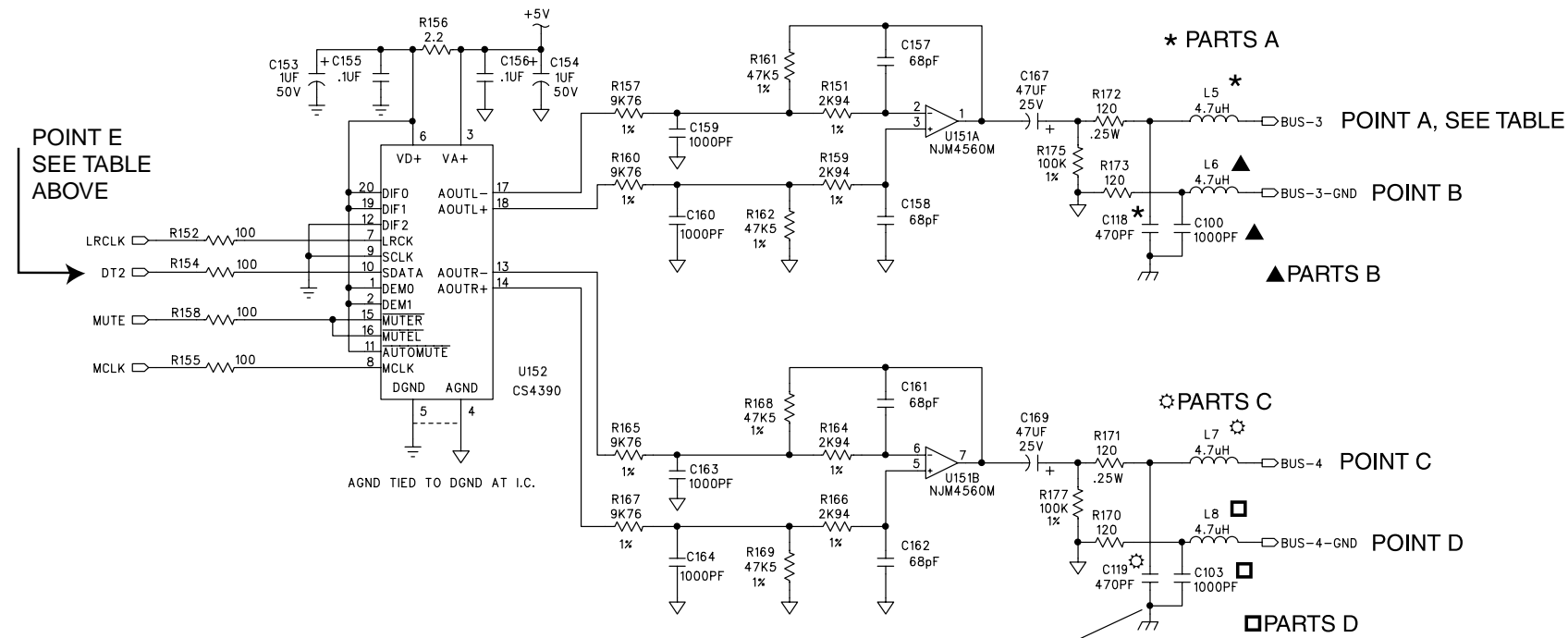
REFERENCE DESIGNATORS AND LABEL DIFFERENCES BETWEEN BUSESSE

IC	PARTS RANGE	EXAMPLE	POINT A	POINT B	POINT C	POINT D	POINT E	PARTS A	PARTS B	PARTS C	PARTS D
U52	IN THE 10'S	R55, U54	BUS-1	BUS-1 GND	BUS-2	BUS-2 GND	DT1	L1, C108	L2, C98	L3, C117	L4, C99
U152	IN THE 100'S	R155, C154	BUS-3	BUS-3 GND	BUS-4	BUS-4 GND	DT2	L5, C118	L6, C100	L7, C119	L8, C103
U252	IN THE 200'S	R255, C254	BUS-5	BUS-5 GND	BUS-6	BUS-6 GND	DT3	L9, C120	L10, C104	L11, C121	L12, C105
U352	IN THE 300'S	R355, C354	BUS-7	BUS-7 GND	BUS-8	BUS-8 GND	DT4	L13, C125	L14, C106	L15, C126	L16, C107

Shown below

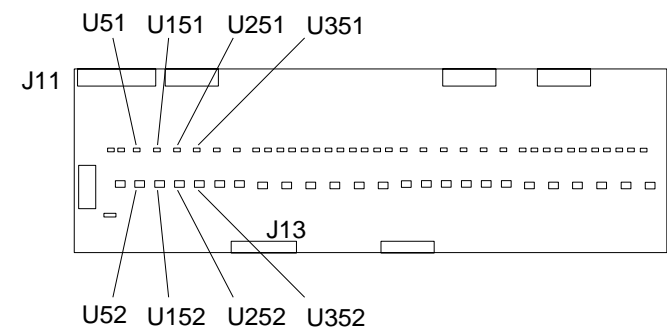
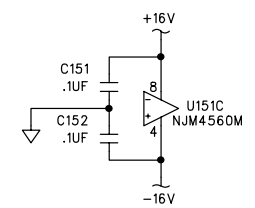
- J11-1 ← BUS-1
- J11-2 ← BUS-1-GND
- J11-3 ← BUS-2
- J11-4 ← BUS-2-GND
- J11-5 ← BUS-3
- J11-6 ← BUS-3-GND
- J11-7 ← BUS-4
- J11-8 ← BUS-4-GND
- J11-9 ← BUS-5
- J11-10 ← BUS-5-GND
- J11-11 ← BUS-6
- J11-12 ← BUS-6-GND
- J11-13 ← BUS-7
- J11-14 ← BUS-7-GND
- J11-15 ← BUS-8
- J11-16 ← BUS-8-GND

- J13-1 ← DT1
- J13-2 ← DR1
- J13-3 ← DT2
- J13-4 ← DR2
- J13-5 ← DT3
- J13-6 ← DR3
- J13-7 ← DT4
- J13-8 ← DR4
- J13-9 ← DT5
- J13-10 ← DR5
- J13-11 ← DT6
- J13-12 ← DR6
- J13-13 ← DT7
- J13-14 ← DR7
- J13-15 ← DT8
- J13-16 ← DR8
- J13-17 ← METER_DR
- J13-18 ← FB19



THIS CIRCUIT IS REPEATED FOUR TIMES. THE REF DESIGNATORS AND LABEL DIFFERENCES BETWEEN THE FOUR CIRCUITS ARE SHOWN IN THE TABLE ABOVE

NOTE: FOR BUS-2 (IC=U52), THIS POINT IS TIED TO CHASSIS WITH A SOLDER LUG J100 TO CHASSIS



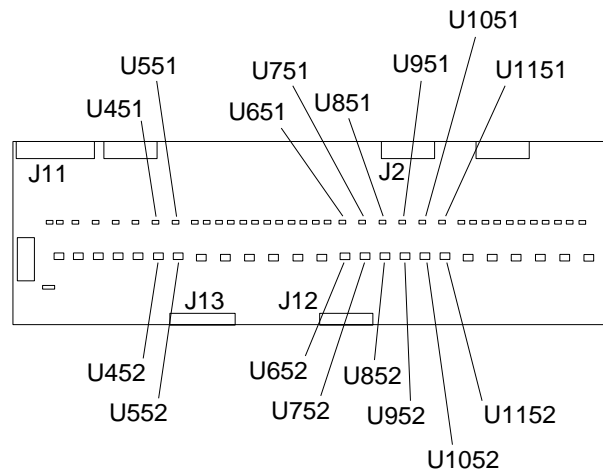
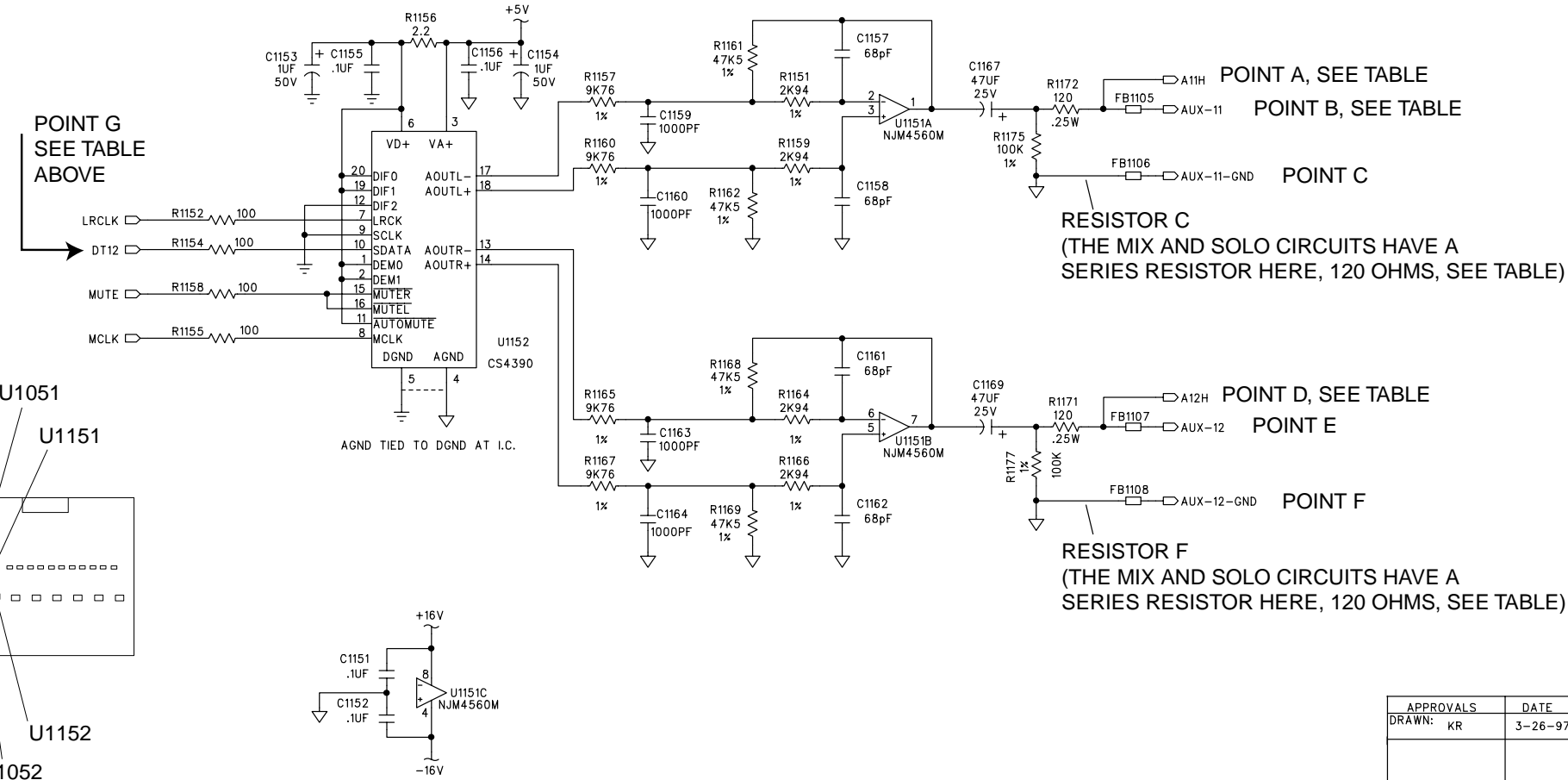
APPROVALS	DATE	 Mackie Designs Inc. Woodinville, Wa.	
DRAWN: KR	3-26-97		
SCHEMATIC, DIGITAL 8-BUS A/D D/A "CODEC" CARD			
SIZE D	SCALE: NONE	DWG. NO. 990-113-00	REV. B
DWG FILE:			Sheet 3 of 4

TABLE OF DIFFERENCES
WHERE THE CHANNELS ARE OTHERWISE IDENTICAL

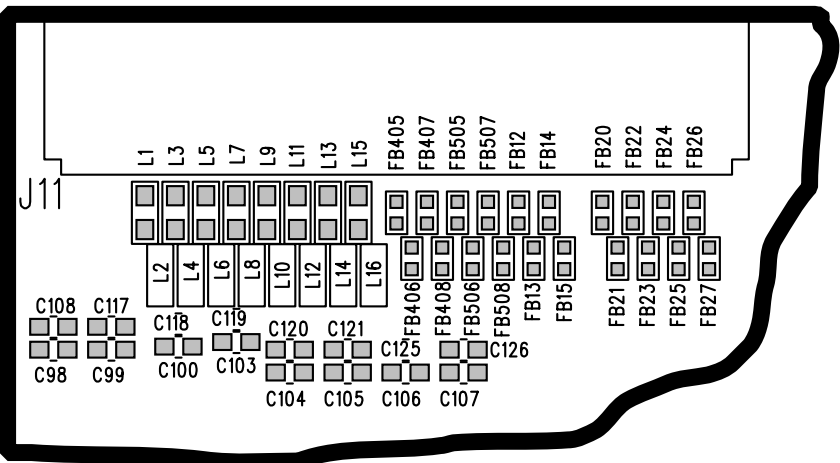
IC	PARTS RANGE	POINT A	POINT B	POINT C	POINT D	POINT E	POINT F	POINT G	RES C	RES F
U452	IN THE 400'S	NC	MIX-L	MIX-L GND	NC	MIX-R	MIX-R GND	DT5	R473	R470
U552	IN THE 500'S	NC	SOLO-L	SOLO-L GND	NC	SOLO-R	SOLO-R GND	DT6	R573	R570
U652	IN THE 600'S	NC	AUX-1	AUX-1 GND	NC	AUX-2	AUX-2 GND	DT7		
U752	IN THE 700'S	NC	AUX-3	AUX-3 GND	NC	AUX-4	AUX-4 GND	DT8		
U852	IN THE 800'S	NC	AUX-5	AUX-5 GND	NC	AUX-6	AUX-6 GND	DT9		
U952	IN THE 900'S	NC	AUX-7	AUX-7 GND	NC	AUX-8	AUX-8 GND	DT10		
U1052	IN THE 1000'S	A9H	AUX-9	AUX-9 GND	A10H	AUX-10	AUX-10 GND	DT11		
U1152	IN THE 1100'S	A11H	AUX-11	AUX-11 GND	A12H	AUX-12	AUX-12 GND	DT12		

Shown below

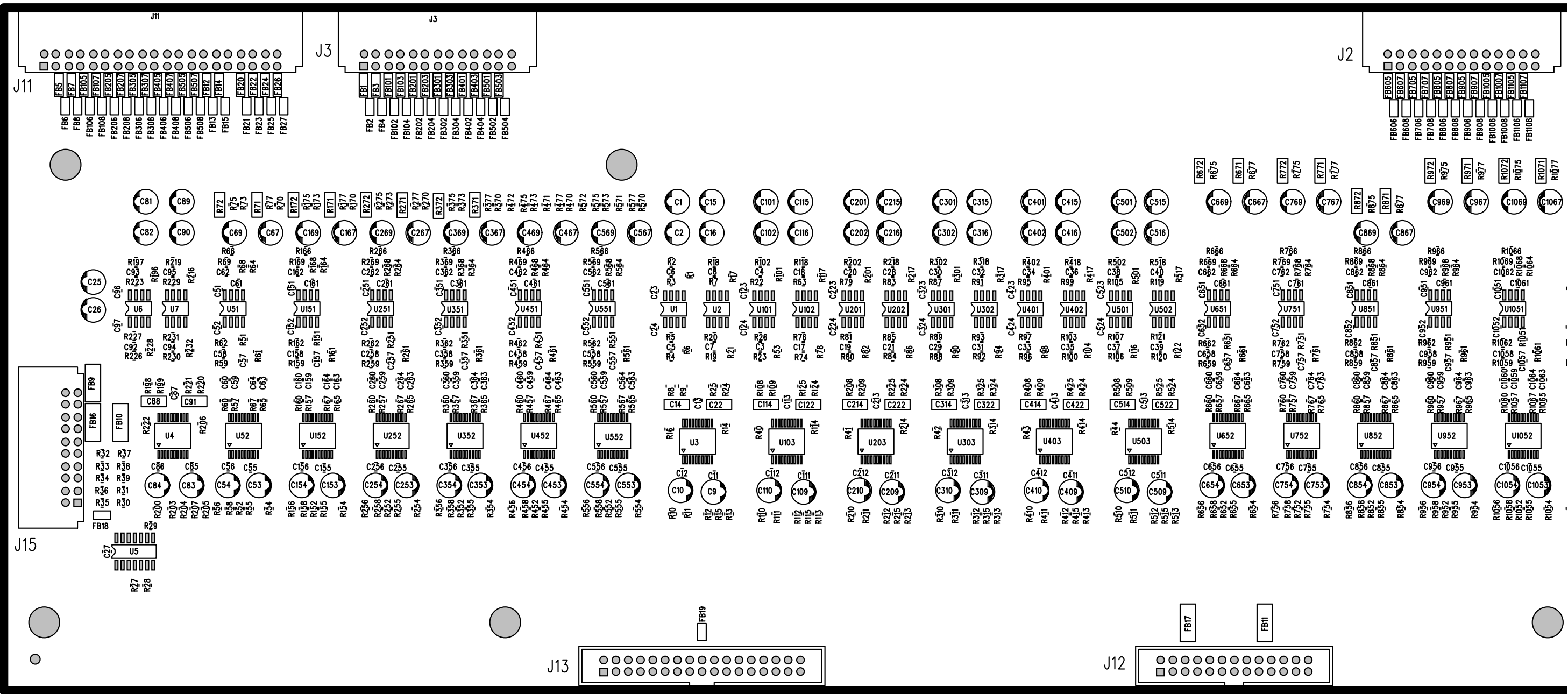
NOTE: AUX-1 TO AUX-12 CONNECT TO J2
SOLO AND MIX CONNECT TO J11
DT5 TO DT8 CONNECT TO J13
DT9 TO DT12 CONNECT TO J12
SEE SHEET 2 FOR CONNECTOR
PIN NUMBERS

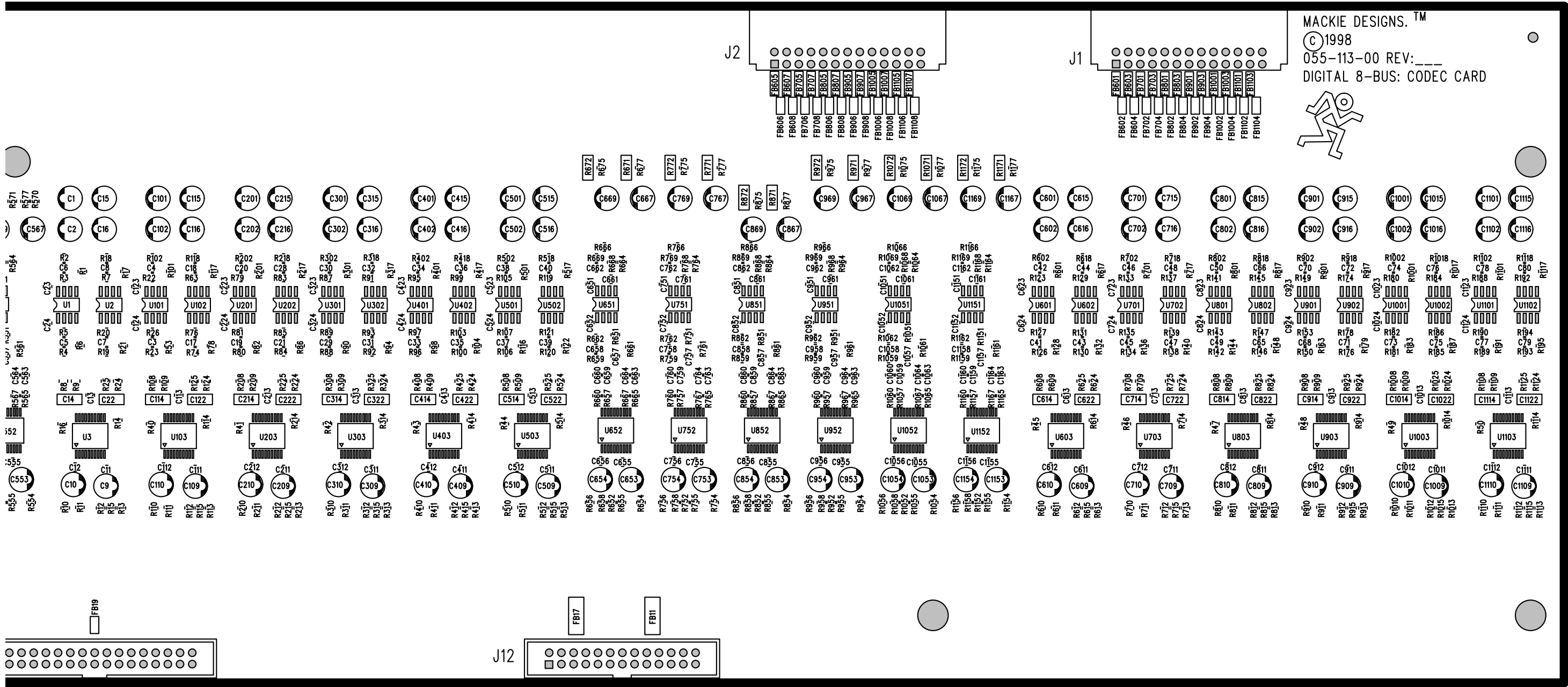


APPROVALS	DATE	 Mackie Designs Inc. Woodinville, Wa.	
DRAWN: KR	3-26-97		
SCHEMATIC, DIGITAL 8-BUS A/D D/A "CODEC" CARD			
SIZE	SCALE:	DWG. NO.	REV.
D	NONE	990-113-00	B
DWG FILE:		Sheet 4 of 4	



Rev B has these different parts, all other parts remain the same as Rev A.





MACKIE DESIGNS.™
 © 1998
 055-113-00 REV:____
 DIGITAL 8-BUS: CODEC CARD

