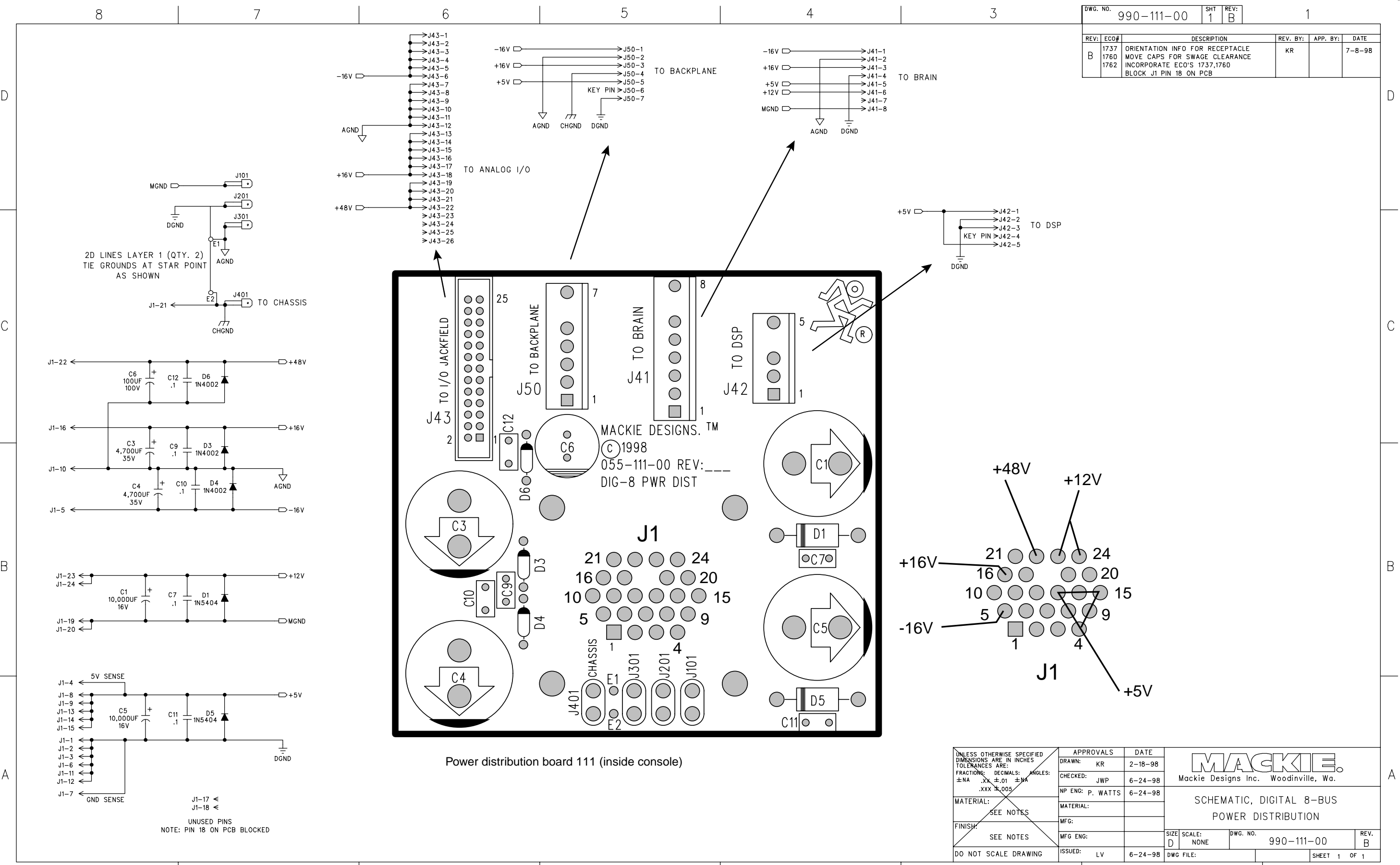


REV:	ECO#	DESCRIPTION	REV. BY:	APP. BY:	DATE
B	1737	ORIENTATION INFO FOR RECEPTACLE	KR		7-8-98
	1760	MOVE CAPS FOR SWAGE CLEARANCE			
	1762	INCORPORATE ECO'S 1737,1760 BLOCK J1 PIN 18 ON PCB			



Power distribution board 111 (inside console)

J1-17 <
J1-18 <
UNUSED PINS
NOTE: PIN 18 ON PCB BLOCKED

UNLESS OTHERWISE SPECIFIED DIMENSIONS ARE IN INCHES TOLERANCES ARE: FRACTIONS: DECIMALS: ANGLES: ±NA .XX ±.01 ±NA .XXX ±.005	APPROVALS	DATE	MACKIE Mackie Designs Inc. Woodinville, Wa.
	DRAWN: KR	2-18-98	
	CHECKED: JWP	6-24-98	
	NP ENG: P. WATTS	6-24-98	
MATERIAL:	MATERIAL:		SCHEMATIC, DIGITAL 8-BUS POWER DISTRIBUTION
SEE NOTES	MFG:		
FINISH:	MFG ENG:		SIZE SCALE: D NONE
DO NOT SCALE DRAWING	ISSUED: LV	6-24-98	DWG. NO. 990-111-00
			REV. B
			DWG FILE:
			SHEET 1 OF 1