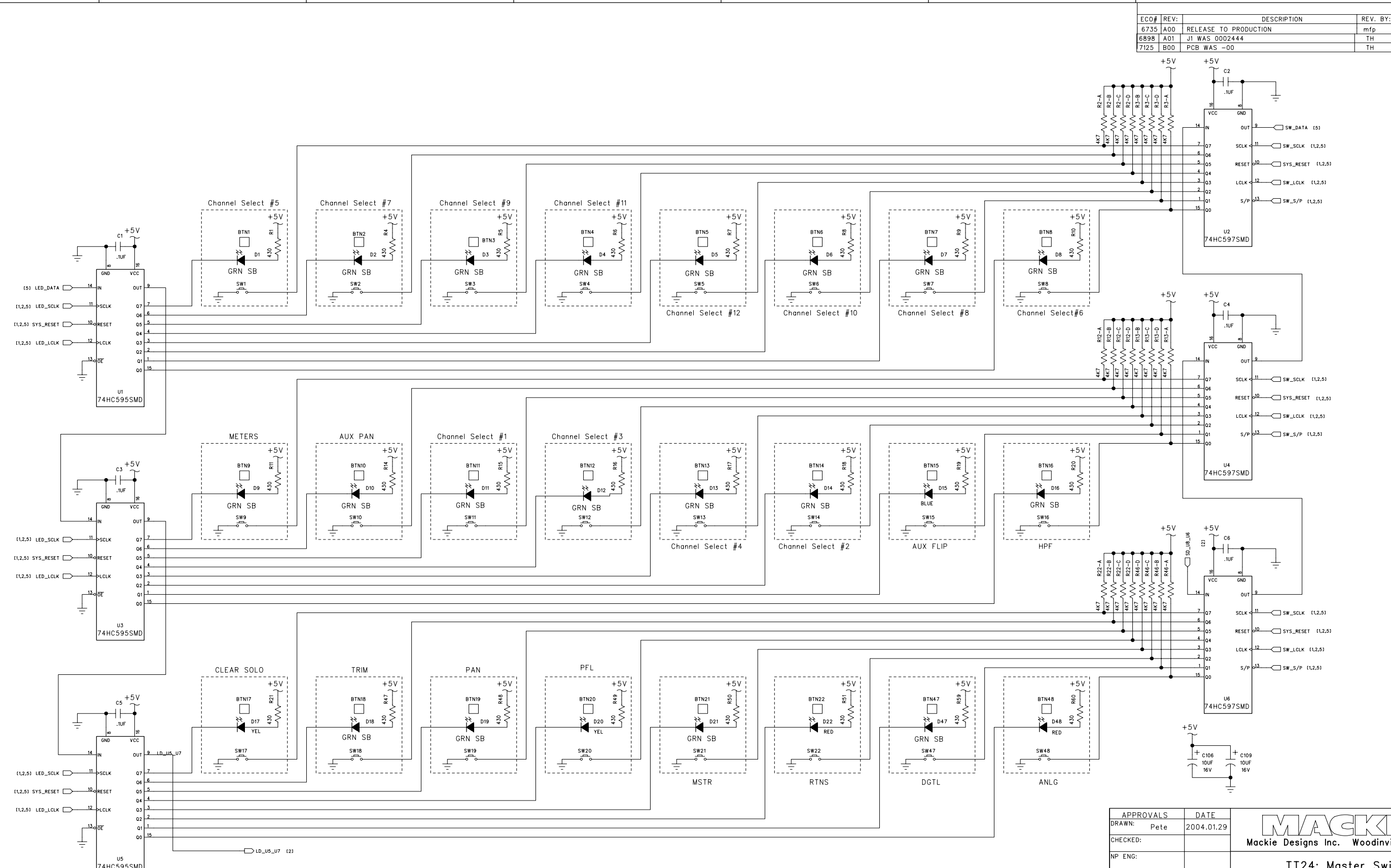


ECO#	REV:	DESCRIPTION	REV. BY:	APP. BY:	DATE
6735	A00	RELEASE TO PRODUCTION	mfp		01/30/04
6898	A01	J1 WAS 0002444	TH		3/23/04
7125	B00	PCB WAS -00	TH		5/28/04

D
C
B
A

D
C
B
A

8 7 6 5 4 3 2 1



APPROVALS	DATE
DRAWN: Pete	2004.01.29
CHECKED:	
NP ENG:	
MATERIAL:	
MFG:	
MFG ENG:	
ISSUED:	

MACKIE
Mackie Designs Inc. Woodinville, Wa.

**TT24: Master Switch
Switches & LEDs**

SIZE: D	SCALE: NONE	DWG. NO. SCH0007203	REV. B00
DWG FILE:		SHEET 1 OF 6	

©2004 MACKIE DESIGNS INC.
ALL RIGHTS RESERVED
THE INFORMATION CONTAINED HEREIN
IS PROPRIETARY AND CONFIDENTIAL
PROPERTY OF MACKIE DESIGNS INC.



8 7 6 5 4 3 2 1

D

C

B

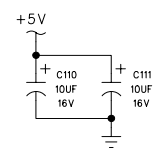
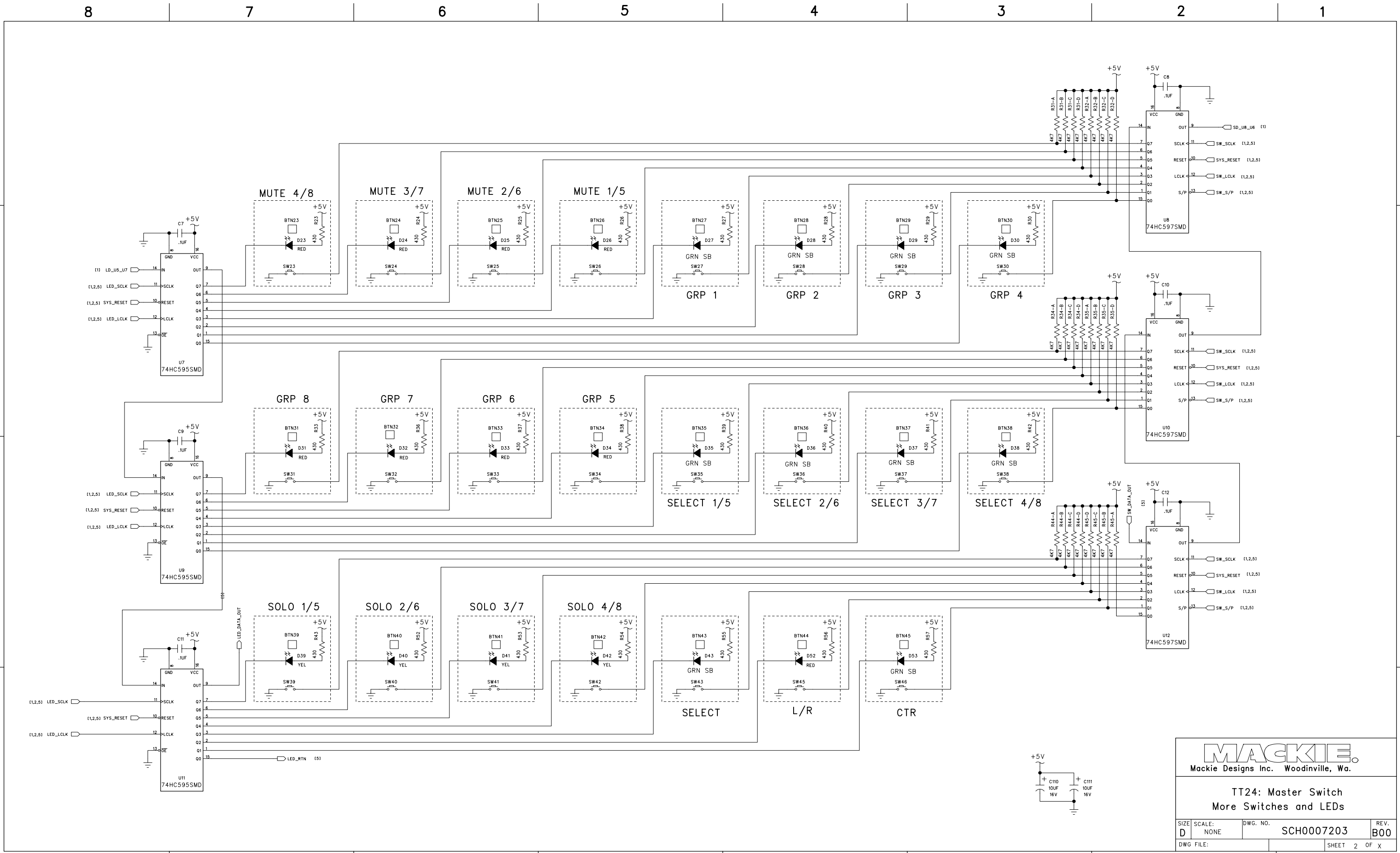
A

D

C

B

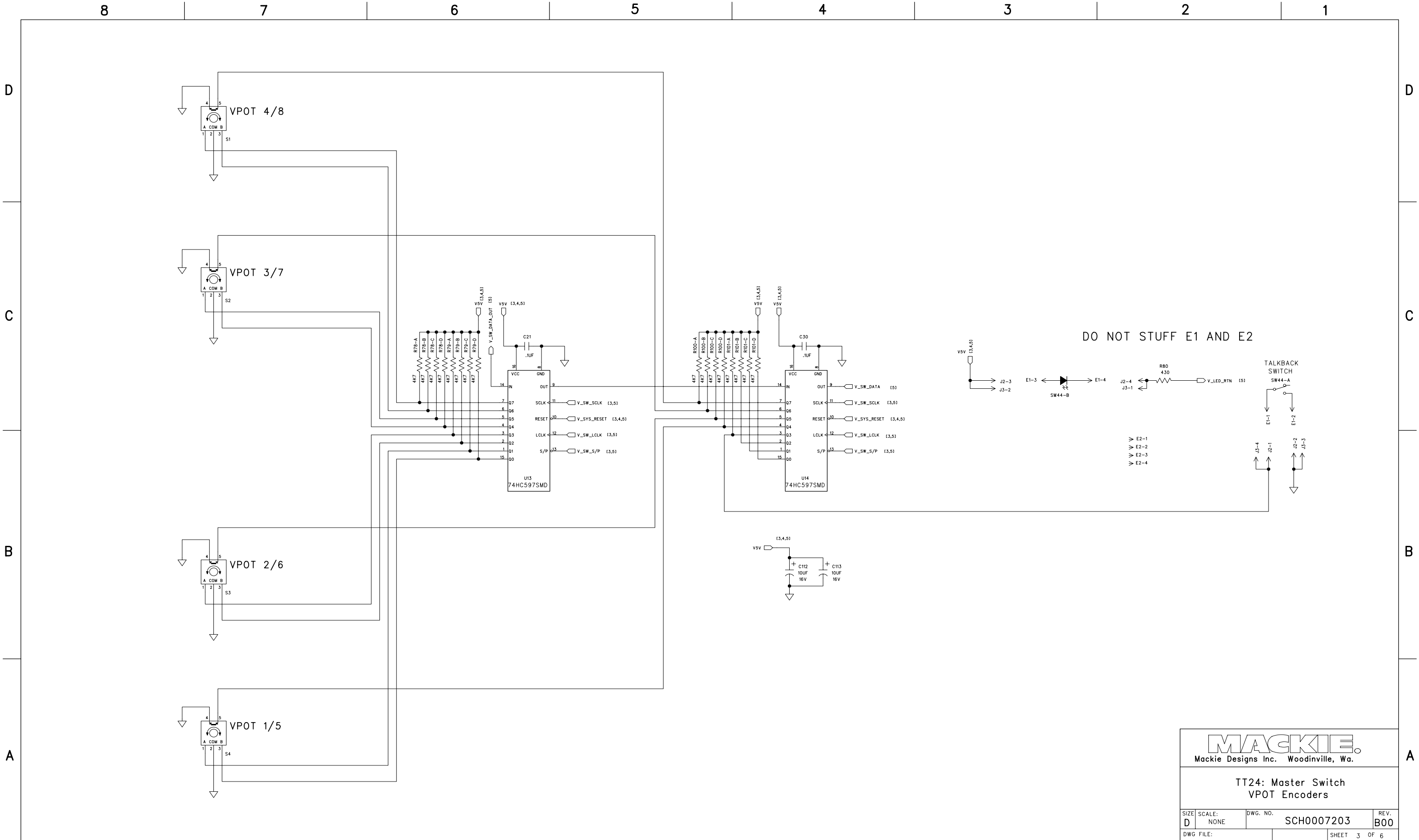
A



MACKIE.
Mackie Designs Inc. Woodinville, Wa.

TT24: Master Switch
More Switches and LEDs

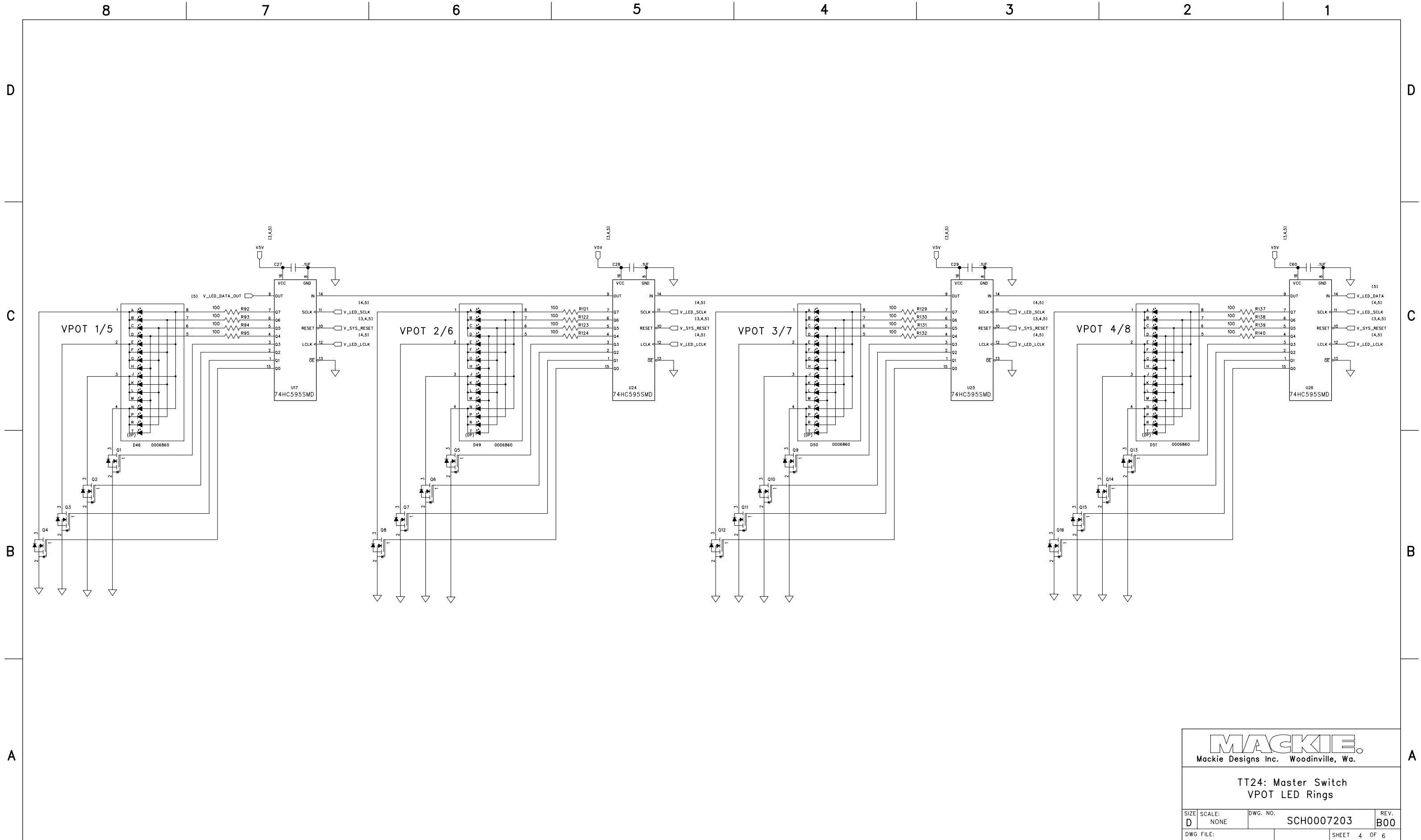
SIZE: D	SCALE: NONE	DWG. NO. SCH0007203	REV. B00
DWG FILE:		SHEET 2 OF X	



MACKIE.
Mackie Designs Inc. Woodinville, Wa.

**TT24: Master Switch
VPOT Encoders**

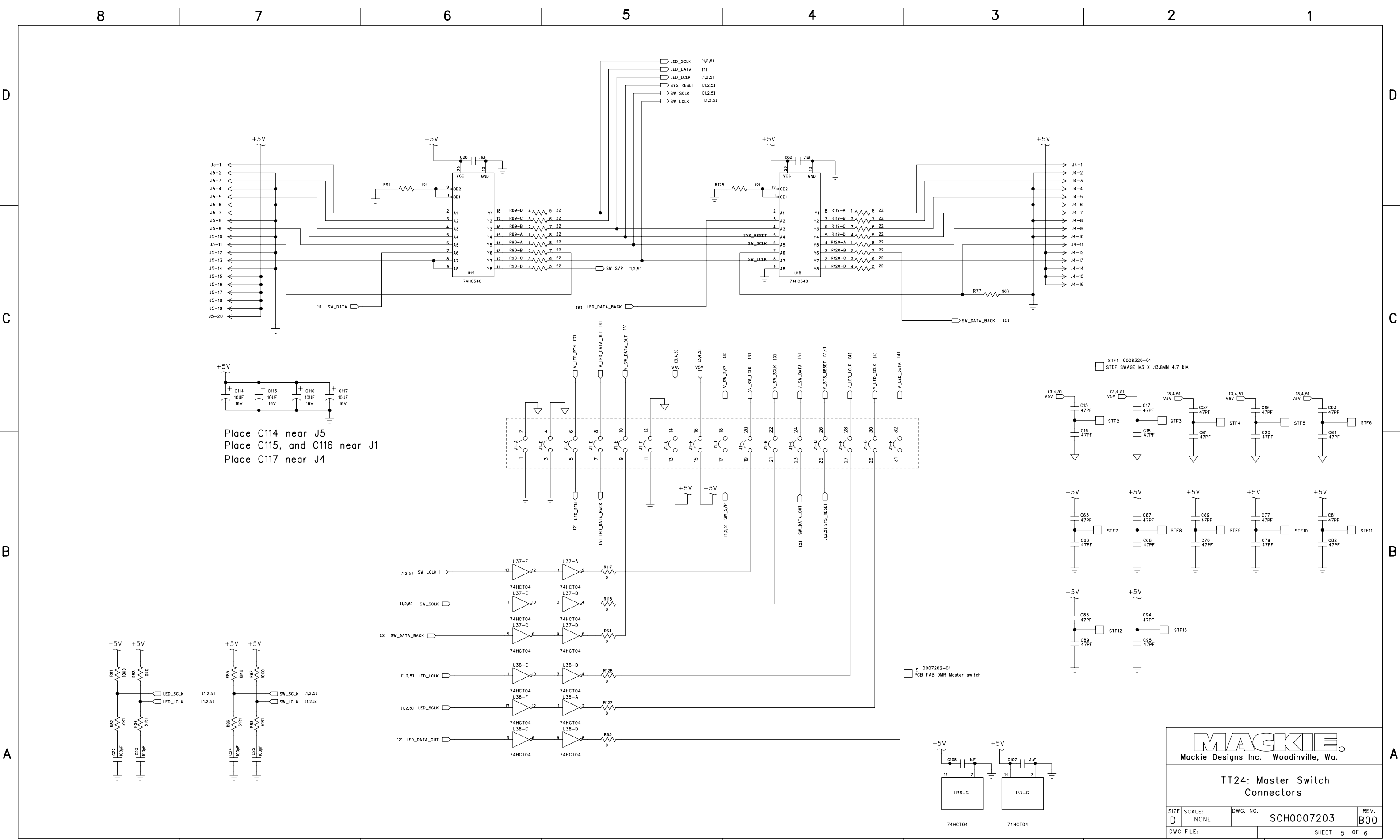
SIZE D	SCALE: NONE	DWG. NO. SCH0007203	REV. B00
DWG FILE:		SHEET 3 OF 6	



MACKIE.
Mackie Designs Inc. Woodinville, Wa.

**TT24: Master Switch
VPOT LED Rings**

SIZE D	SCALE: NONE	DWG. NO. SCH0007203	REV. B00
DWG FILE:		SHEET 4 OF 6	



MACKIE
Mackie Designs Inc. Woodinville, Wa.

TT24: Master Switch Connectors

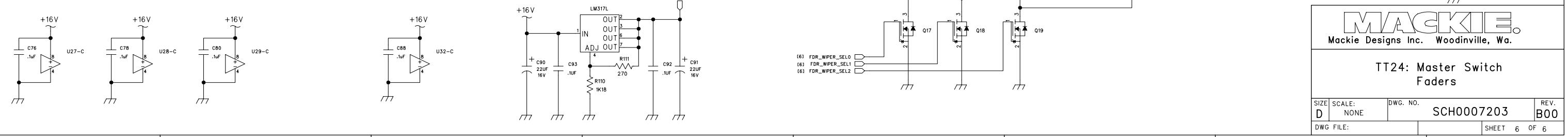
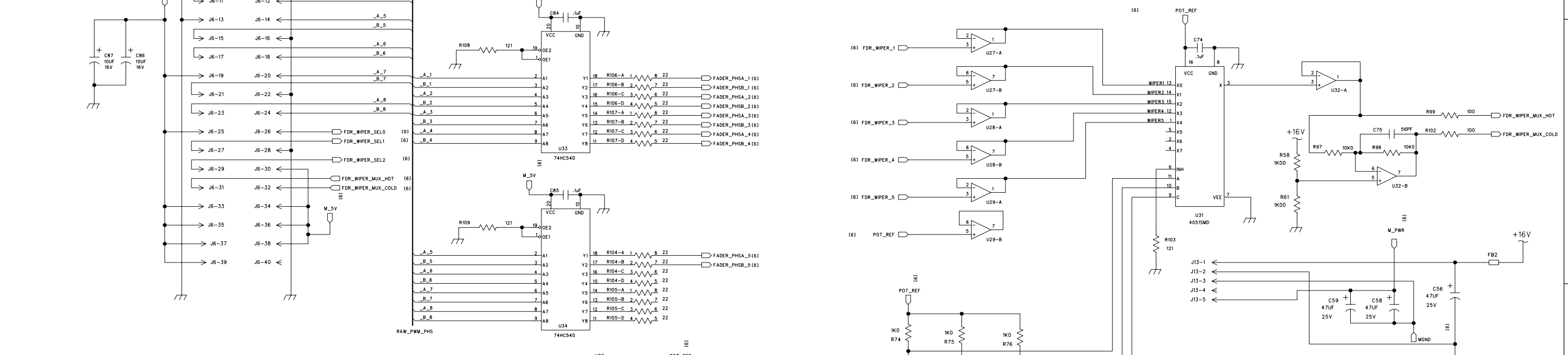
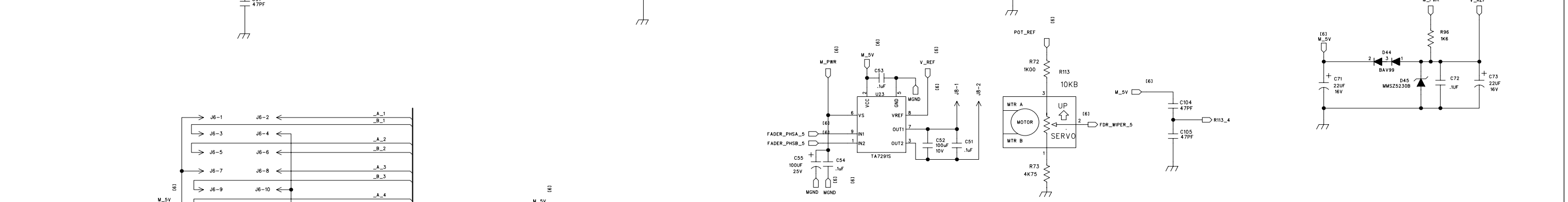
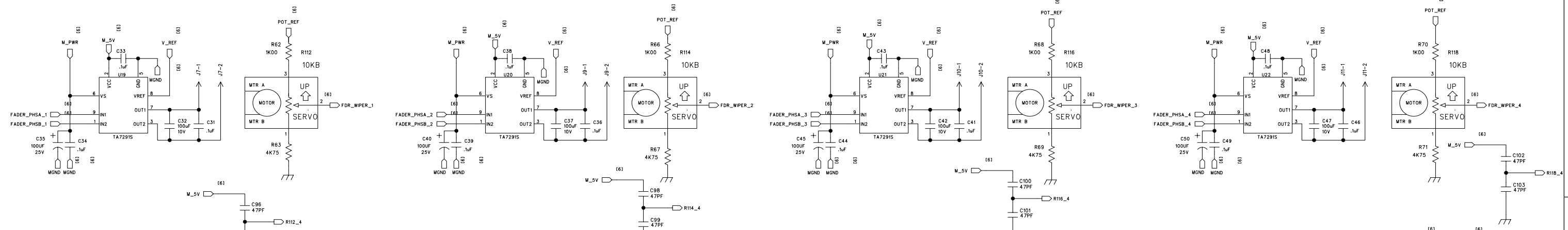
SIZE: D	SCALE: NONE	DWG. NO. SCH0007203	REV. B00
DWG FILE:		SHEET 5 OF 6	

D

C

B

A



MACKIE
Mackie Designs Inc. Woodinville, Wa.

TT24: Master Switch Faders

SIZE: D	SCALE: NONE	DWG. NO.: SCH0007203	REV. B00
DWG FILE:		SHEET 6 OF 6	