

ECO#	REV:	DESCRIPTION	REV. BY:	APP. BY:	DATE
6915	A01	0006889-01 PCB WAS 0006889-00.	TH		3/25/04
6944	B00	Replace 16MHz oscillator with 20MHz	TH		3/25/04
7152	C00	Change shift register reset/enable	SL		6/14/04

D

C

B

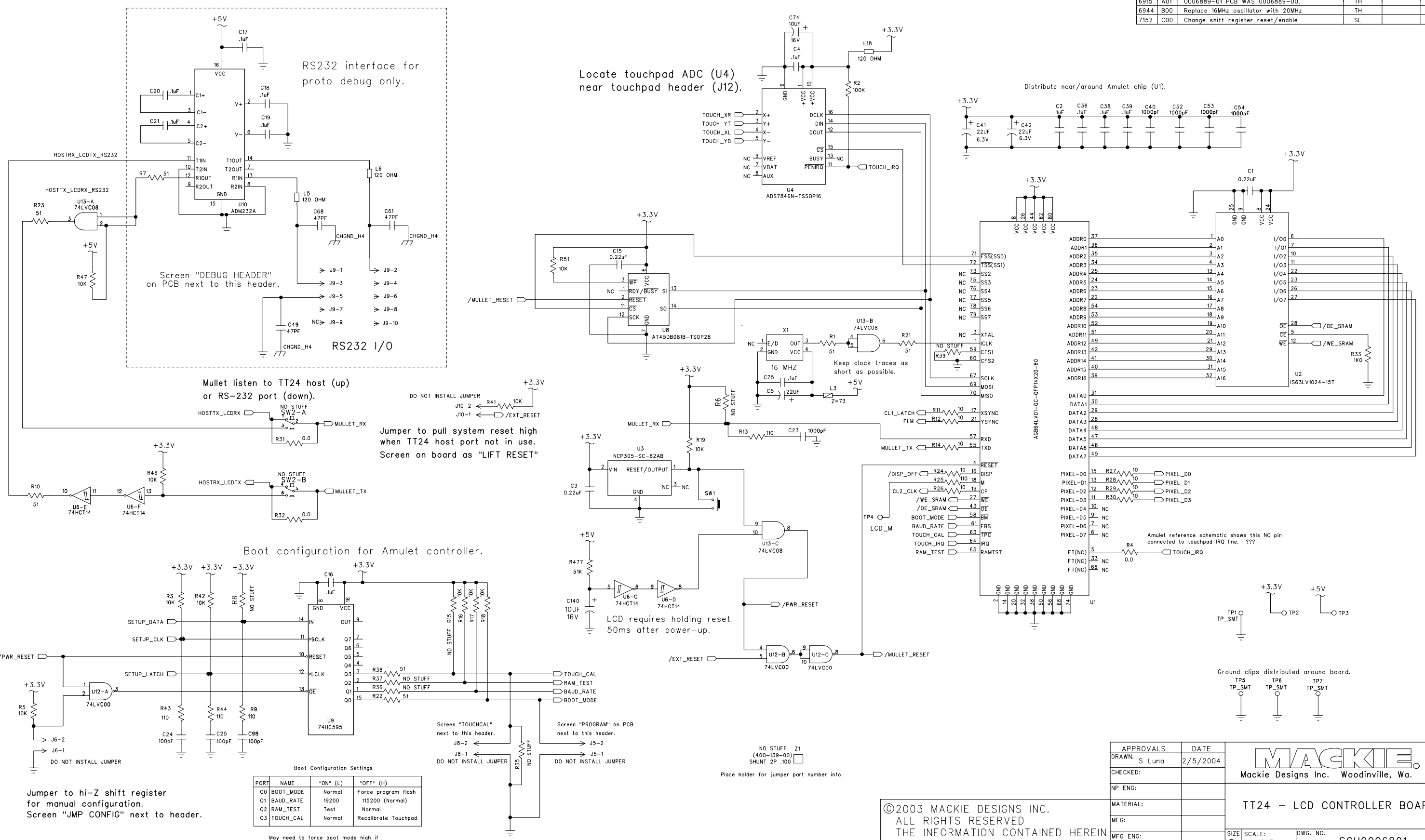
A

D

C

B

A



RS232 interface for proto debug only.

Locate touchpad ADC (U4) near touchpad header (J12).

Distribute near/around Amulet chip (U1).

Screen "DEBUG HEADER" on PCB next to this header.

RS232 I/O

Mullet listen to TT24 host (up) or RS-232 port (down).

Jumper to pull system reset high when TT24 host port not in use. Screen on board as "LIFT RESET"

Boot configuration for Amulet controller.

LCD requires holding reset 50ms after power-up.

Amulet reference schematic shows this NC pin connected to touchpad IRQ line. ???

Boot Configuration Settings

PORT	NAME	"ON" (L)	"OFF" (H)
Q0	BOOT_MODE	Normal	Force program flash
Q1	BAUD_RATE	19200	115200 (Normal)
Q2	RAM_TEST	Test	Normal
Q3	TOUCH_CAL	Normal	Recalibrate Touchpad

May need to force boot mode high if unresponsive during programming.

Jumper to hi-Z shift register for manual configuration. Screen "JMP CONFIG" next to header.

Screen "TOUCHCAL" next to this header. Screen "PROGRAM" on PCB next to this header.

NO STUFF Z1 (400-139-00) SHUNT 2P .100 Place holder for jumper part number info.

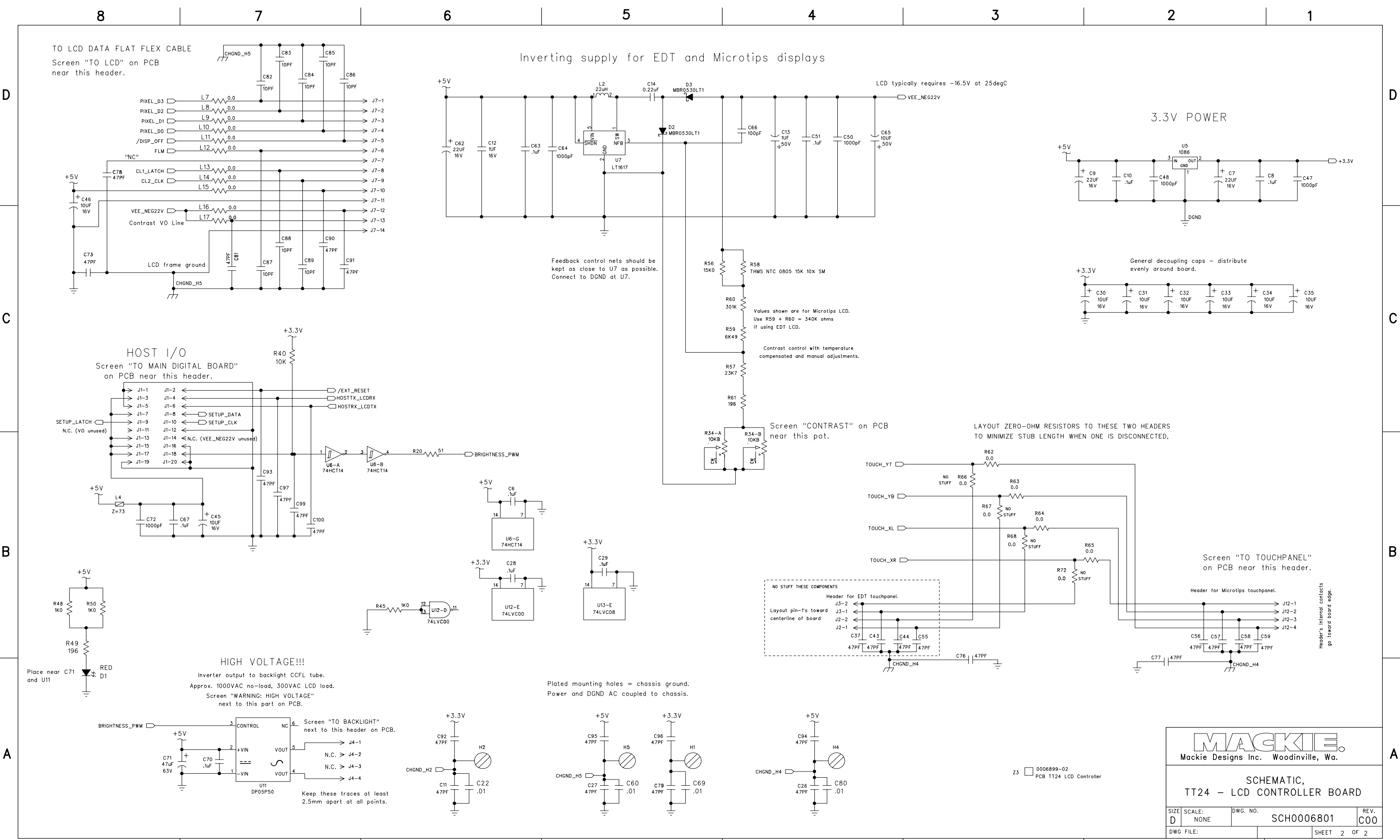
APPROVALS	DATE
DRAWN: S Luna	2/5/2004

MACKIE
Mackie Designs Inc. Woodinville, Wa.

TT24 - LCD CONTROLLER BOARD

©2003 MACKIE DESIGNS INC. ALL RIGHTS RESERVED. THE INFORMATION CONTAINED HEREIN IS PROPRIETARY AND CONFIDENTIAL PROPERTY OF MACKIE DESIGNS INC.

MATERIAL:	SIZE: D	SCALE: NONE	DWG. NO. SCH0006801	REV. C00
MFG:	ISSUED:	DWG FILE:	SHEET 1 OF 2	



MACKIE
Mackie Designs Inc. Woodinville, Wa.

**SCHMATIC,
TT24 - LCD CONTROLLER BOARD**

SIZE: D	SCALE: NONE	DWG. NO.: SCH0006801	REV: C00
DWG FILE:		SHEET 2 OF 2	